

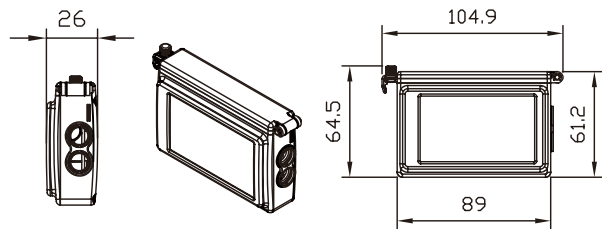
Product Description



Indicator

- Green indicator: Green light means (power on)
- Red indicator: Red light flashing is presented as "on recording", the red light flickering shows force recording status.
- Blue indicator: Blue indicator: blue light flashing while GPS signal is not stable, otherwise is stable GPS signals.

Dimension (Unit: mm)



Specifications

Items	Description
Video input	2 Channel
Frame Size	NTSC: 30 fps (D1); PAL: 25 fps (D1)
Power Supply	DC12V, 250mA
Operating Temperature	-15°C~ 50°C
Storage	SD card, 4G or above, class 10 or better. (SanDisk and Transcend recommended)
Recording	Automatically starts continuous recording when powered on
Recording Content	Date, time, video, audio, G-sensor data and GPS data (only when GPS receiver is installed).
Playback	Software player (on computer) and remote controller (directly from unit)
Audio input	External microphone (optional)
Time setup	Automatic calibration by GPS signals. If GPS signal is unavailable, internal clock will be used.
G-Sensor	Internal 3-axis accelerometer

★NOTE 1. Version updating is not going to inform, please check the on-going updating information
2. SD Card. (optional)

Accessories

- Standard: (a) 2.5 M Power Cable (b) SD Card Reader
(c) Remote Controller (d) Driver CD
(e) Quick Guide (f) Velcro Tape
- Optional: (a) SD card, 4GB or above, class 10 or above
(b) External GPS Receiver
(c) Microphone (no waterproof, need to be installed in a appropriate position)
(d) Bracket (two type)

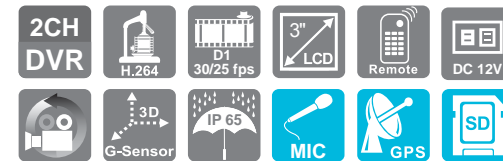
MOBILE SURVEILLANCE

Mini 2CH Mobile DVR with built-in 3 Inch LCD Monitor

Mobile Digital Video Recorder



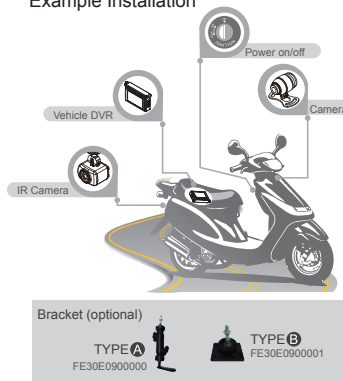
2013 MAR V1.1



■ optional

Vehicle Installation

Example Installation



Warning

- (1) Please install this device with the help of professional technician to avoid damaging your vehicle.
- (2) For installation by none-technician, please use tapes instead of boring tools to avoid damaging the electrical and gasoline system.
- (3) For safety, switch off ignition before installation, and please keep away from gasoline pipeline and tank.
- (4) Before inserting wires through holes, temporarily wrap the terminal with tape to prevent bad connection from accumulated dirt or debris.
- (5) Tightly seal all electrical connection with tape to prevent loose connection or leak leaking to the connection.
- (6) Connect the power behind the key ignition and fuse (not directly to the vehicle battery) to avoid depleting the battery.
- (7) The device should be fixed to the vehicle. Tumbling inside the storage trunk will damage the device.

Cables



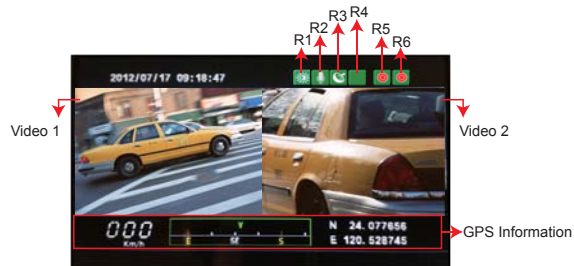
- (1) Power connector, male
- (2) Channel 1 Video Input*
- (3) Channel 2 Video Input*
- (4) External microphone input
- (5) External GPS antenna input

NOTE: Use this device with compatible vehicle cameras



- (a) Power Adapter - Female connector.
- (b) Live Wire: Wire to ACC power or the positive pole of Engine Starter. (+)
- (c) Earth Wire: Wire to Negative Pole. (-)
- (d) Null Line: Wire to earth wire. Covered with heat-shrinkable tube to avoid short with motorcycle body.

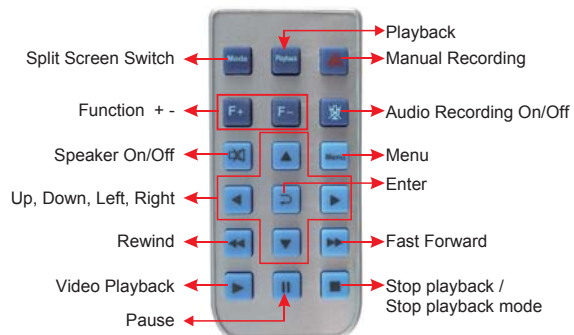
Live View



Icon

- R1. : daylight mode / : night mode
- R2. : audio recording is on / : audio recording is off
- R3. : GPS is ready / : No GPS signal
- R4. : normal (continuous) recording. / : manual recording / : emergency recording activated by the G-sensor
- R5. : CH1 have video signal / : CH1 has no video input
- R6. : CH2 have video signal / : CH2 has no video input

Remote Controller



Memory Disk

1. Plug the memory disk to recorder

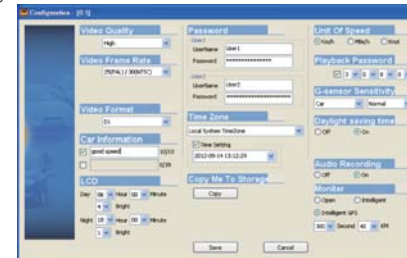


- (1) Loose the screw in counterclockwise rotation, and open the protective cover to insert/remove SD card.
- (2) Tightly close the cover afterward.

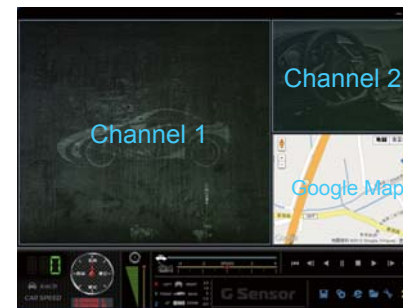
*NOTE: The memory disk need to be purchased separately

2. Configuring the Memory Disk

One side of card translator is plug into SD card, the other one is plug into USB plot before recording. Record format and display of the device can be set by configuration of PC client. After setting completed, the SD card can plug into the device and start recording again.



Player Software



Run the player software (included in the CD).
NOTE: The software requires Direct X version 9.0 or above.

NOTE: GPS coordinates, speed and map data are only available if GPS receiver is connected to the device.